



**NITEKO**  
LED COMPANY  Solid State Lighting Specialist



eleva  
series

# WHY NITEKO?

Born from an academic spin-off, Niteko is an Italian innovative company based in Montemesola (TA), producing lighting fixtures with LED technology. Its products are the most technologically advanced on the market and are widespread in Italy, Europe and worldwide.

Niteko fixtures offer lighting solutions with low environmental impact and allowing considerable savings in terms of energy and costs.



**In 2014** Niteko has been listed by "Corriere della Sera" among the 21 Italian Startup of 1 million euro.

**In 2015** the company joined the top 100 "**STARTUPITALIA**" and won the "**Castrum Minervae**" award, reserved to the Apulian company that has developed new processes in research and technological modernisation and that has positioned itself in the market with innovative products.

## CERTIFICATIONS:



## PARTNERS:



Consorzio per il Recupero  
e lo Smaltimento  
di Apparecchiature  
di Illuminazione



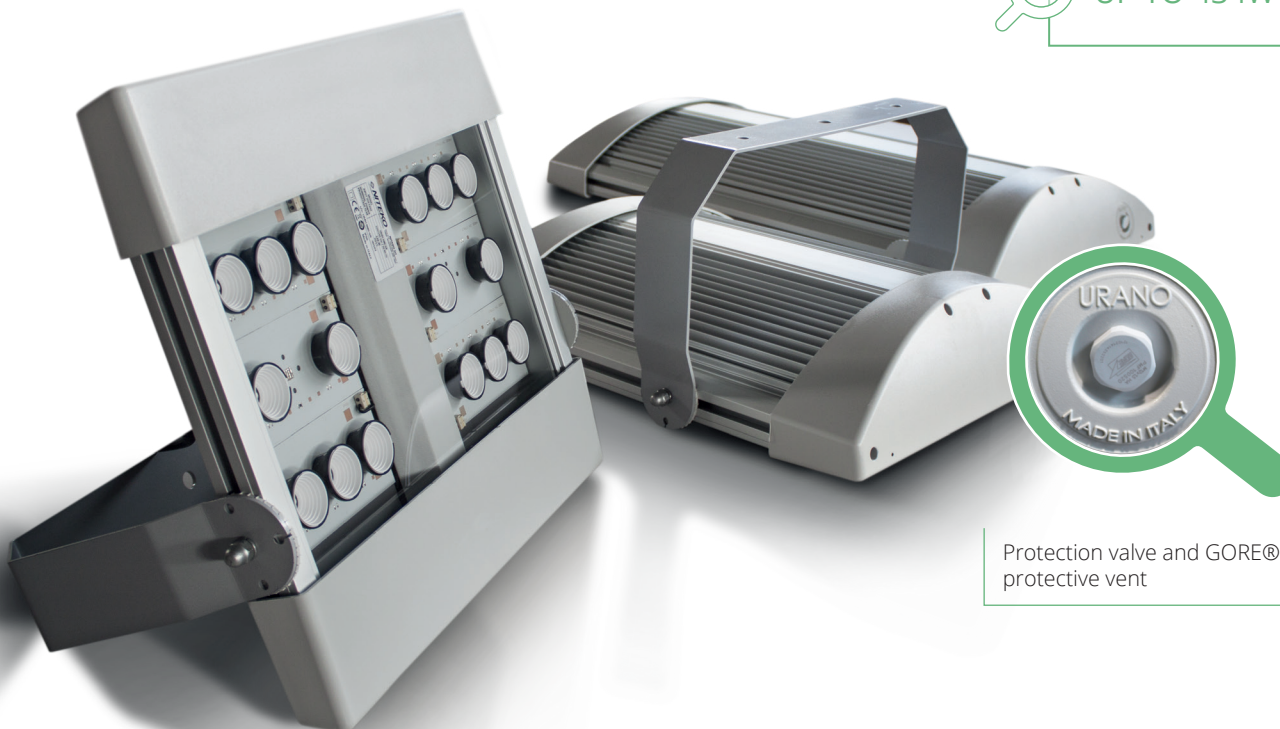
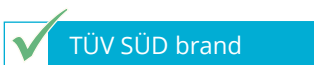
# urano

## The right support for you



*LED universal floodlight with high performances*

The resistant and reliable fixture, the several optics available and mounting options make this floodlight adaptable to the different lighting requests and needs, everywhere.



Protection valve and GORE® protective vent



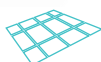
Street



Tunnel



Urban



Photovoltaic



Industrial



Large areas



Sport



Architectural



Commercial



# Quality and performance to your industrial space

*The most advanced LED technology under a traditional cover*

Halley follows the shape of traditional industrial lamps but using at the same time the most advanced technology on LED lighting industry. The Lamp fits perfectly inside commercial Spaces, sports Facilities, Warehouses and industrial Spaces.

✓ Simply strong

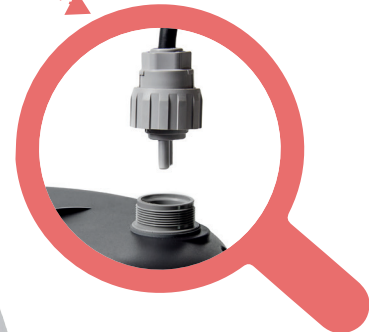
✓ Easy to install

✓ Active Cooling System

✓ Maximum efficiency



UP TO 245W



Fast electric connection



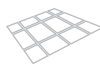
Street



Tunnel



Urban



Photovoltaic



Industrial



Large areas



Sport



Architectural



Commercial

# futura & guida

Look at the street with a different view

*Realized in compliance with rules against lighting pollution*

The street fixtures Guida and Futura consist of die cast aluminium single body with wide cooling fins that guarantee diodes long lifetime. The power supply compartment and both optical and electronic elements are thermally insulated in order to increase the lamp efficiency and life span.

The coating is resistant to corrosion, abrasion, flaking and salt mist exposition. All these features allow to guarantee high and durable performances also in case of adverse weather conditions.

✓ Great flexibility

✓ Excellent efficiency

✓ Fast management and comfort

✓ Telemangement and control

UP TO 134W

UP TO 142W



Available for photovoltaic applications



Street



Tunnel



Urban



Photovoltaic



Industrial



Large areas



Sport



Architectural



Commercial

# zenith | victoria | urban kit

## Technology meets tradition

### LED technology innovation for classic street furniture

Technologically advanced lamps that allow to take advantage from all benefits of LED, preserving urban centers, avenues and old town centre classic charm.

Zenith, Victoria & Urban Kit are ecofriendly products since they are built with recyclable materials and their components are fractionable, disposable and recyclable.

✓ LED technology for traditional street furniture

✓ Benefits for the PA

✓ Respect for the environment

✓ Care of citizen

UP TO 75W





# REMOTE CONTROL

Remote control allows to manage the lighting fixtures ensuring to save on energy and on maintenance costs.



Control and adjustment systems are integrated in the lighting body and available in the following versions:



Self adjustment  
(PRG)



Voltage regulation  
(PLV)



Power line carrier adjustment  
(LPL)



Cable adjustment  
(DIM)



Cable regulation  
(DALI)



Radio wave adjustment  
(ZIGBEE PRO)





ENJOY THE LIGHT

**NITEKO Srl**

Zona P.I.P. - Viale delle Imprese, 3 - 74020 Montemesola (TA) - ITALY  
Ph. [+39] **099 567 12 19** • Fax [+39] **099 567 11 12**

IT02867530731

[www.niteko.com](http://www.niteko.com)    [info@niteko.com](mailto:info@niteko.com)